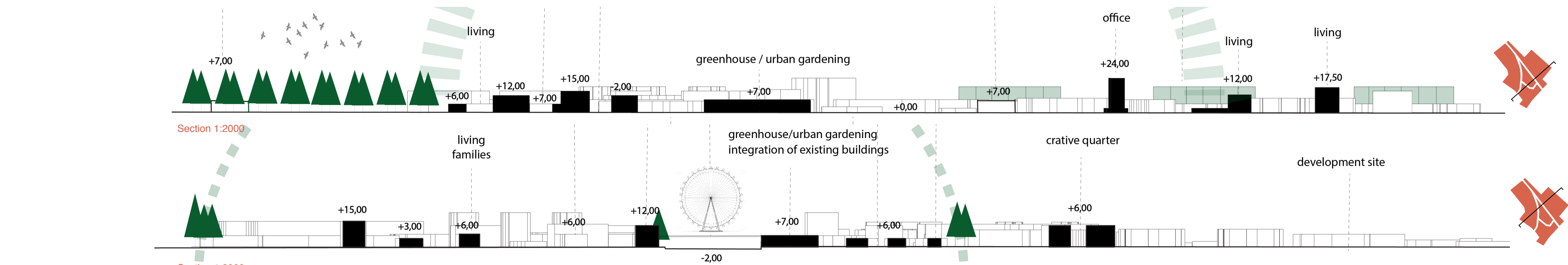


Programmatic distribution



The streets around the train station are designed for shared mobility and the public space is pedestrian and cycling-friendly



Social Aspects

Mobility

Resources

- inhabitants of Hyvinkää occupy the Hämeenkatu Bridge by a self-organized street food festival event
- car traffic on the bridge is temporarily stopped, the bridge is tuned to a new public space
- the event is organized by a neighbourhood initiative
- greenhouse is built as a productive and social catalyst for the site
- new bridges are built to replace old connections
- reconnection of the four separated parts of the city core
- new car park
- mobility reorganization
- creating a green corridor for biodiversity
- charity for a new pedestrian bridge that replaces the outdated bridge north to the train station
- bike repair
- the neighbourhood organizes a tree-planting initiative, the green ring appears
- cycle paths along the waterfront with direct connection to the city
- park
- neighbourhoods around the train station are built
- safe mobility, new cycle paths, street dimensions are reduced, pedestrian zone
- park
- artists occupy the old Rennto Factory building and build up a creative quarter
- regional shopping center

